



# Panache PAINT



## Paint Project Guide

Passion for Paint. SINCE 1994.



# Supreme Product Range



Passion for Paint. SINCE 1994.



The Panaché 1-2-3 Paint Project Guide is your easy-to-use reference tool! Simply match your surface area to the images provided, for the surface you wish to paint, and you will be able to determine the correct preparation and application strategy.

Refer to the “You Will Need” guide, this will guide you regarding the correct consumables required for a successful paint project.

Once you have chosen your desired finishing coat, you can select your colour at your nearest Panaché Paint outlet, and calculate the amount of paint required, using the Panaché- Estimated Spread Rate Summary at the back of this booklet.

Double check you have everything you need, by using the handy checklist on the back page.

## *Panaché YOUR SPACE!*

Interior Walls..... 4

Exterior Walls..... 6

Interior Timber..... 8

Exterior Timber ..... 10

Interior Metal ..... 12

Exterior Metal ..... 14

Interior Ceilings..... 18

Exterior Roofs ..... 20

# Interior Walls

## What do your walls look like?



### NEW

- Make sure your plaster is DRY (21 days)
- Apply one coat of either:
  - Panache Water Based Plaster Primer with a roller and 50mm brush or
  - Panache Solvent Based Plaster Primer with a roller and 50mm brush
- Allow to dry for 24 hours and then apply 2 Panaché topcoats of your choice



### PREVIOUSLY PAINTED & SOUND

- Glossy surfaces must be lightly sanded first
- Wash down the walls with Liquid Sugar Soap
- Rinse the surface with clean water and allow to dry completely
- Apply 2 coats of recommended Panaché topcoats

#### NOTE:

- If changing to a Water Based paint, you will require one coat of Universal Undercoat as an extra adhesion coat for surface preparation
- Allow this to dry for 24 HOURS before applying your topcoat



### FLAKING

- Scrape all loose bits with a 75mm scraper
- Sand with 80 grit floorpaper
- Wash with Liquid Sugar Soap and rinse with clean water
- Wait for surface to dry completely
- Apply one coat of Panache Primer Cure
- Allow to dry for 16 to 18 hours
- Apply two Panache topcoats of your choice



### CRACKS

- Open the cracks in a 'V' shape with a 35mm scraper
- Apply Panache Primer Cure into the crack and allow to dry for 16 to 18 hours
- Apply Ready for Use Crack Filler and allow to dry completely
- Sand with 100 grit sandpaper
- Prime all filled areas with Panache Primer Cure or Panache Solvent Based Plaster Primer
- Allow to dry 24 Hours
- Apply 2 Panache topcoats of your choice





## MOULD

- Wash all mouldy areas with household bleach/ fungal wash
- Once area is completely dry, apply one coat of Panache Primer Cure
- Allow to dry for 24 hours
- Apply 2 Panache topcoats of your choice

### **NOTE:** Kitchen and Bathrooms

- Apply 2 coats of Panache High Gloss Enamel (Solvent Base) or Panache Polyglo (Water Base or Solvent Base)



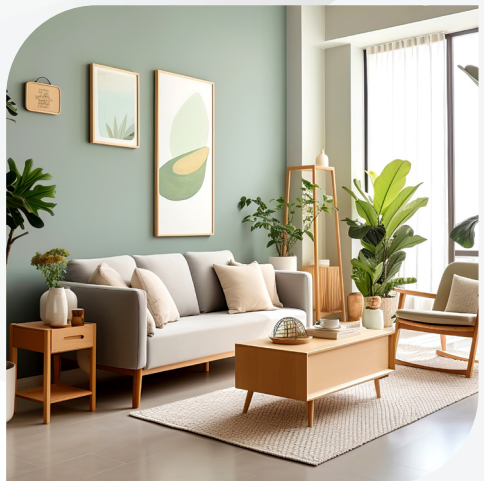
## DAMP

- First locate and STOP the source of the damp
- If there is more than 15% moisture on the surface the paint system will fail
- Consult your paint specialist for professional recommendations
- Ensure surface is COMPLETELY DRY
- Brush area with a wire brush
- Wash area with a Liquid Sugar Soap solution and rinse with clean water
- Allow the surface to dry completely
- Apply one coats of Panache Primer Cure (thinned down with 20% per liter of paint, of mineral turpentine)
- Allow to dry for 16 to 18 hours
- Apply second coat of un-thinned Panache Primer Cure
- Allow to dry for 16 to 18 hours
- Apply 2 coats of Panache Topcoat of your choice



## YELLOWING

- Sand the surface area with a scouring pad and Liquid Sugar Soap Solution
- Rinse with clean water
- Allow to dry completely
- Apply 1 coat of Panache Universal Undercoat
- Allow to dry for 16 to 18 hours
- Apply 2 Panache Water Based Topcoats of your choice



# Interior Ceilings



## NEW

- Prime all bishop strips and nail heads with one coat of Panache Multi Purpose Primer
- Prime all polystyrene cornices with one coat of Multi-Purpose Primer
- Living Areas:
  - Apply one coat of Panache Solvent Based Plaster Primer
  - Allow to dry for 16 to 18 hours
  - Apply 2 coats of Panache top coats of your choice
- Kitchens And Bathrooms:
  - Apply 2 coats of Panache High Gloss Enamel (Solvent Base) or Panache Polyglo (Water Base or Solvent Base)



## PREVIOUSLY PAINTED & SOUND

- Wash down the walls with Liquid Sugar Soap solution
- Rinse with clean water
- Allow the surface to dry completely
- Apply 2 coats of your preferred Panache top coat
- **NOTE:** Kitchens And Bathrooms
  - Apply 2 coats of Panache High Gloss Enamel (Solvent Base) or Panache Polyglo (Water Base or Solvent Base)



## MOULD

- Scrub the ceiling and mouldy areas, with a scouring pad household bleach/fungal wash
- Rinse with clean water
- Once area is completely dry, apply one coat of Panache Primer Cure
- Allow to dry for 24 hours
- Apply 2 coats of Panache High Gloss Enamel (Solvent Base) or Panache Polyglo (Water Base or Solvent Base)



## LEAK STAIN

- First find the source of the leak and stop it
- Once the surface is completely dry, brush the area with a scouring pad and Liquid Sugar Soap solution
- Rinse with clean water
- Allow to surface to dry completely
- Apply one coat of Panache Universal Undercoat
- Allow drying time of 16 to 18 hours
- Apply 2 coats of Panache Preferred top coat



### FLAKING

- Scrape all loose bits with a 75mm scraper
- Sand with 120 grit floorpaper
- Wash with Liquid Sugar Soap and wait for surface to dry
- Rinse with clean water and allow surface to dry completely
- Apply one coat of Panache Primer Cure
- Apply 2 coats of Panaché preferred top coats
- **NOTE:** Kitchens And Bathrooms
  - Apply 2 coats of Panache High Gloss Enamel (Solvent Base) or Panache Polyglo (Water Base or Solvent Base)



### RUST/BLEED

- Sand the rusting areas with a scouring pad and Liquid Sugar Soap
- Rinse with clean water and wait for the surface to dry
- Apply 2 coats of Panache Anti-Corrosive Metal Primer
- Allow drying time of between 4 to 6 hours
- Apply 2 coats of preferred Panache top coats
- **NOTE:** Kitchens And Bathrooms
  - Apply 2 coats of Panache High Gloss Enamel (Solvent Base) or Panache Polyglo (Water Base or Solvent Base)



### YELLOWING

- Sand surface with a scouring pad and Liquid Sugar Soap Solution
- Rinse with clean water and allow surface to dry completely
- Apply one coat of Panache Universal Undercoat
- Apply 2 Panache water-based top coats of your choice
  - To prevent Yellowing we recommend a water based top coat of your choice



# Exterior Walls

## What do your walls look like?



### NEW

- Make sure your plaster is DRY (21 days)
- Apply one coat of Panache Solvent Based Plaster Primer with a roller and 50mm brush
- Allow to dry for 24 hours and then apply 2 Panaché topcoats of your choice



### PREVIOUSLY PAINTED & SOUND

- Glossy surfaces must be lightly sanded first
- Wash down the walls with Liquid Sugar Soap and High Pressure Washer
- Rinse the surface with clean water and allow to dry completely
- Apply 2 coats of recommended Panaché topcoats

**NOTE:** If changing to a Water Based paint, you will require one coat of Universal Undercoat as an extra adhesion coat for surface preparation

- Allow this to dry for 24 HOURS before applying your topcoat



### FLAKING

- Scrape all loose bits with a 75mm scraper
- Sand with 80 grit floorpaper
- Wash with Liquid Sugar Soap and a High Pressure Washer
- Rinse with clean water and allow surface to dry completely
- Apply one coat of Panache Primer Cure
- Allow to dry for 16 to 18 hours
- Apply 2 coats of Panaché preferred top coats



### CRACKS

- Open the cracks in a 'V' shape with a 35mm scraper
- Apply Panache Primer Cure into the crack and allow to dry for 16 to 18 hours
- Apply Ready for Use Crack Filler and allow to dry completely
- Sand with 100 grit sandpaper
- Prime all filled areas with Panache Solvent Based Plaster Primer and allow to dry for 16 to 18 hours
- Apply two Panache topcoats of your choice



## MOULD

- Wash all mouldy areas with a bristle brush and household bleach/fungal wash
- Rinse area with clean water and High Pressure Washer
- Once area is completely dry, apply one coat of Panache Primer Cure
- Allow to dry for 24 hours
- Apply two Panache topcoats of your choice



## DAMP

- First locate and STOP the source of the damp
  - If there is more than 15% moisture on the surface the paint system will fail
  - Consult your paint specialist for professional recommendations
- Ensure surface is COMPLETELY DRY
- Brush area with a wire brush
- Wash area with a Liquid Sugar Soap solution High Pressure Washer, and rinse with clean water
- Allow the surface to dry completely
- Apply one coats of Panache Primer Cure (thinned down with 20% per liter of paint, of mineral turpentine)
- Allow to dry for 16 to 18 hours
- Apply second coat of un-thinned Panache Primer Cure
- Allow to dry for 16 to 18 hours
- Apply 2 coats of Panache Topcoat of your choice



## CHALKING

- Wash the walls with a scouring pad and a Liquid Sugar Soap
- Rinse with clean water and allow the surface to dry completely
- Over Enamel, apply one coat of Panache Universal Undercoat
- Over PVA, apply one coat of Panache Bonding Liquid
- Allow to dry for 16 to 18 hours
- Apply 2 Panache topcoats of your choice





# Interior Timber



## PREVIOUSLY PAINTED / TREATED AND SOUND PAINTED

- Sand smooth with recommended cabinet paper in the direction of the woodgrain
- Remove the dust with a damp cloth and allow the surface to dry
- Apply 2 coats of the recommended Varnish or Sealer (adhere to drying times between coats as per recommendations on packaging)
- White/colour paint:
  - Apply one coat of White Wood Primer
  - Apply 2 coats Topcoats of either Panache High Gloss Enamel (Solvent Base) or Panache Polyglo (Water Base or Solvent Base)

## TREATED

- Apply one coat of White Wood Primer
- Apply 2 coats of Topcoats of either Panache High Gloss Enamel (Solvent Base) or Panache Polyglo (Water Base or Solvent Base)



## FLAKING / CRACKING

- Remove coating with paint stripper
- Remove residue with steelwool and lacquer thinners
- Apply 3 coats of recommended Varnish or Sealer (adhere to drying times between coats as per recommendations on packaging)
- White/colour paint:
  - Apply one coat of White Wood Primer
  - Apply 2 coats Topcoats of either Panache High Gloss Enamel (Solvent Base) or Panache Polyglo (Water Base or Solvent Base)

*\*DO NOT put varnish over preservative or polish*





# Exterior Timber



## PREVIOUSLY PAINTED / TREATED & SOUND

### PAINTED

- Sand smooth with recommended cabinet paper in the direction of the woodgrain
- Remove the dust with a damp cloth and allow the surface to dry
- Apply 2 coats of the recommended Varnish or Sealer (adhere to drying times between coats as per recommendations on packaging)
- White/Colour Paint:
  - Apply one coat of Pink Wood Primer
  - Apply 2 coats Topcoats of either Panache High Gloss Enamel (Solvent Base) or Panache Polyglo (Water Base or Solvent Base)

### TREATED

- Apply one coat of Pink Wood Primer
- Apply 2 coats of Topcoats of either Panache High Gloss Enamel (Solvent Base) or Panache Polyglo (Water Base or Solvent Base)



## FLAKING / CRACKING

- Remove coating with paint stripper
- Remove residue with steelwool and laquer thinners
- Apply 3 coats of recommended Varnish or Sealer
- WHITE/COLOUR PAINT:
  - Apply one coat of White Wood Primer
  - Apply 2 coats Topcoats of either Panache High Gloss Enamel (Solvent Base) or Panache Polyglo (Water Base or Solvent Base)

*\*DO NOT put varnish over preservative or polish*







### CHALKING

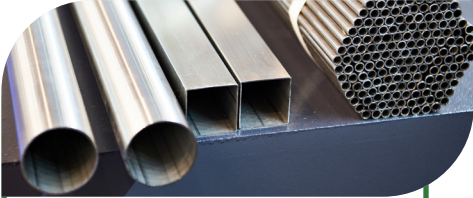
- Using a scouring pad and a Liquid Sugar Soap solution, wash the timber
- Allow the surface to dry
- Apply one coat of Panache Universal Undercoat
- Apply 2 coats Topcoats of either Panache High Gloss Enamel (Solvent Base) or Panache Polyglo (Water Base or Solvent Base)



### TIMBER ROT / BLACKENED

- Remove the area that is severely damaged and replace with new timber
- Treat blackened wood with a WOOD REVIVER
- Apply 3 coats of Panache varnish or sealer of your choice
- White/Colour Paint:
  - Apply one coat of Panache Pink Wood Primer
  - Apply 2 coats Topcoats of either Panache High Gloss Enamel (Solvent Base) or Panache Polyglo (Water Base or Solvent Base)

# Interior Metal



## NEW

- If the surface is not primed, sand surface with scouring pad or sandpaper
- Wash the surface with Liquid Sugar Soap solution
- Rinse surface with clean water and allow to dry
- Apply one coat of Panache Anti-Corrosive Metal Primer
  - Apply 2 coats of Panache Anti-Corrosive Metal Primer in Coastal Areas
- Allow to dry for 4 to 6 hours
- Apply one coat of Panache Universal Undercoat
- Allow to dry for 16 to 18 hours
- Apply 2 coats Topcoats of either Panache High Gloss Enamel (Solvent Base) or Panache Polyglo (Water Base or Solvent Base)



## PREVIOUSLY PAINTED & SOUND

- Sand the surface with a scouring pad and Liquid Sugar Soap solution
- Rinse with clean water and allow to dry
- If previously painted with ENAMEL - Apply Panache Universal Undercoat and allow to dry for 16 to 18 hours
- Apply 2 coats Topcoats of either Panache High Gloss Enamel (Water Base or Solvent Base) or Panache Polyglo (Water Base or Solvent Base)



## FLAKING

- Remove all loose and flaking paint with Paint Stripper
- Sand the surface with Scouring pad and Liquid Sugar Soap solution
- Rinse with clean water and allow to dry
- Apply one coat of Panache Universal Undercoat
- Allow to dry for 16 to 18 hours
- Apply 2 coats Topcoats of either Panache High Gloss Enamel (Solvent Base) or Panache Polyglo (Water Base or Solvent Base)





## RUST

- Sand the rusting areas with a scouring pad and Liquid Sugar Soap
- Rinse with clean water and allow the surface to dry
- Apply 2 coats of Panache Anti-Corrosive Metal Primer
- Allow to dry for 4 to 6 hours between coats
- Apply 2 coats of either Panache High Gloss Enamel (Solvent Base) or Panache Polyglo (Water Base or Solvent Base)



## YELLOWING

- Sand the surface with a scouring pad and Liquid Sugar Soap solution
- Rinse with clean water and allow to dry
- Apply one coat of Panache Universal Undercoat
- Allow to dry for 16 to 18 hours
- Apply 2 Panache top coats of your choice - preferably water based

# Exterior Metal



## NEW

- Sand the surface with a scouring pad and Galvanised Iron Cleaner
- If the surface is not primed, apply 2 coats of Panache Anti-Corrosive Metal Primer Apply one coat of Panache Universal Undercoat
- Allow to dry for:
  - Anti-Corrosive Metal Primer (4 to 6 hours)
  - Panache Universal Undercoat (16-18 hours)
- Apply 2 coats of
  - Panache Roof Acrylic or
  - Panache High Gloss Enamel (Solvent Base) or
  - Panache Polyglo (Water Base or Solvent Base)



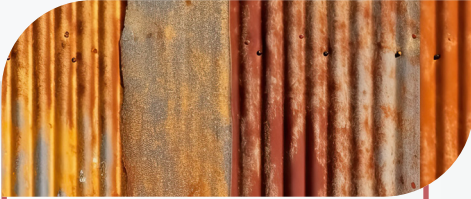
## PREVIOUSLY PAINTED & SOUND

- Sand the surface with a scouring pad and Liquid Sugar Soap solution
- Rinse with clean water and allow to dry
- If previously painted with ENAMEL - Apply Panache Universal Undercoat
- Allow to dry for 16 to 18 hours
- Apply 2 coats of
  - Panache Roof Acrylic or
  - Panache High Gloss Enamel (Solvent Base) or
  - Panache Polyglo (Water Base or Solvent Base)



## FLAKING

- Remove all loose and flaking paint with Paint Stripper
- Wash the surface with a scouring pad and Galvanised Iron Cleaner
- Rinse surface with clean water and allow to dry
- Apply 2 coats of Panache Anti-Corrosive Metal Primer
- Allow to dry for 4 to 6 hours
- Apply one coat of Panache Universal Undercoat
- Allow to dry for 16 to 18 hours
- Apply 2 coats of
  - Panache Roof Acrylic or
  - Panache High Gloss Enamel (Solvent Base) or
  - Panache Polyglo (Water Base or Solvent Base)



## RUST

- Sand the rusting areas with a scouring pad and Galvanised Iron Cleaner
- Rinse with clean water and allow the surface to dry
- Apply 2 coats of Panache Anti-Corrosive Metal Primer Grey/Red Oxide
  - Conduct measle corrosion test, once passed, proceed to the next step
  - If measle corrosion test fails, apply an additional coat of Panache Anti-Corrosive Metal Primer Grey/Red Oxide and allow to dry for 4 to 6 hours
- Apply one coat of Panache Universal Undercoat
- Allow to dry for 16 to 18 hours
- Apply 2 coats of
  - Panache Roof Acrylic or
  - Panache High Gloss Enamel (Solvent Base) or
  - Panache Polyglo (Water Base or Solvent Base)



## FADING

- Sand the surface with a scouring pad and Liquid Sugar Soap solution
- Rinse with clean water and allow to dry
- Apply one coat of Panache Universal Undercoat
- Allow to dry for 16 to 18 hours
- Apply 2 coats of
  - Panache Roof Acrylic or
  - Panache High Gloss Enamel (Solvent Base) or
  - Panache Polyglo (Water Base or Solvent Base)



## CHALKING

- Sand the surface with a scouring pad and Liquid Sugar Soap solution
- Rinse with clean water and allow to dry
- Apply one coat of Panache Universal Undercoat
- Allow to dry for 16 to 18 hours
- Apply 2 coats of
  - Panache Roof Acrylic or
  - Panache High Gloss Enamel (Solvent Base) or
  - Panache Polyglo (Water Base or Solvent Base)



# Exterior Roof



## NEW – METAL

- Wash the surface with a scouring pad and Galvanised Iron Cleaner, and a High-Pressure Washer
- Rinse surface with clean water and allow to dry
- Apply 2 coats of Panache Anti-Corrosive Metal Primer Grey/Red Oxide
- Allow to dry for 4 to 6 hours
- Apply 2 coats of Panache Roof Acrylic or Artisan Roof Cote



## NEW OR PREVIOUSLY PAINTED & SOUND – CEMENT/CLAY/FIBRE CEMENT TILES

- Clean tiles with a High-Pressure Cleaner
- Wait for surface to dry completely
- Apply one coat of Panache Acrylic Bonding Sealer
- ALLOW TO DRY FOR 24 HOURS
- Apply 2 coats of Panache Roof Acrylic or Artisan Roof Cote



## PREVIOUSLY PAINTED & SOUND METAL

- Sand the surface with a scouring pad and Liquid Sugar Soap
- Rinse off with clean water and allow to dry
- Apply 2 coats of Panache Roof Acrylic or Artisan Roof Cote

### NOTE:

- Any peeling or rusted area to be prepared, cleaned and patch primed with Panache Anti-Corrosive Metal Primer



## FLAKING - METAL

- Remove all loose and flaking paint with Paint Stripper
- Degrease the surface with a scouring pad and Galvanised Iron Cleaner
- Rinse surface with clean water and allow to dry
- Apply 2 coats of Panache Anti-Corrosive Metal Primer Grey/Red Oxide
  - Conduct measle corrosion test, once passed, proceed to the next step
  - If measle corrosion test fails, apply an additional coat of Panache Anti-Corrosive Metal Primer Grey/Red Oxide and allow to dry for 4 to 6 hours
- Apply 2 coats of Panache Roof Acrylic or Artisan Roof Cote



### **FLAKING - CEMENT/CLAY/FIBRE CEMENT TILES**

- Remove all loose and flaking with a High-Pressure Cleaner
- Wait for surface to dry completely
- Apply one coat of Panache Acrylic Bonding Sealer
- ALLOW TO DRY FOR 24 HOURS
- Apply 2 coats of Panache Roof Acrylic or Artisan Roof Cote



### **MOULD - CEMENT/CLAY/FIBRE CEMENT TILES**

- Wash all mouldy areas with fungal wash with High Pressure Washer and hard bristle brush
- Allow area to dry completely
- Apply one coat of Panache Acrylic Bonding Sealer
- ALLOW TO DRY FOR 24 HOURS
- Apply two coats of Panache Roof Acrylic or Artisan Roof Cote



### **WHITE/RED DUST**

- Sand the surface with a scouring pad Galvanised Iron Cleaner, with High Pressure Washer
- Rinse with clean water and allow to dry
- Apply 2 coats of Panache Anti-Corrosive Metal Primer Grey Oxide
  - Conduct measles corrosion test, once passed, proceed to the next step
  - If measles corrosion test fails, apply an additional coat of Panache Anti-Corrosive Metal Primer Grey Oxide and allow to dry for 4 to 6 hours
- ALLOW TO DRY FOR 24 HOURS
- Apply 2 coats of Panache Roof Acrylic or Artisan Roof Cote





# Panache PAINT

## Primers & Undercoats

- Panache Plaster Primer
- Panache Primer Cure
- Panache Acrylic Bonding Sealer
- Panache Bonding Liquid
- Panache Universal Undercoat
- Panache Multi Purpose Primer
- Panache Anti Corrosive Metal Primer
- Panache Pink Wood Primer
- Panache White Wood Primer

## Topcoats

- Panache Vinyl Silk
- Panache Super Acrylic PVA
- Panache High Gloss Enamel
- Panache Tufftex
- Panache Roof Acrylic

## Trims

- Panache Eggshell Enamel
- Panache High Gloss Enamel
- Panache Polyglo Polyglo Water Based and Polyglo Solvent Based)
- Panache Stoep & Floor Paint

## Other Accessories

- Drop Sheet
- Masking Tape
- Sandpaper
- Scouring Pads/Steel Wool
- Wire Brush
- Scrapers
- Brush cleaner
- Paint Brushes/Paint Rollers
- Crack filler
- Sealants
- Ladders
- Extension pole
- Mutton Cloth
- Overalls
- Gloves and Goggles
- Thinners
- Turpentine
- General purpose cleaner
- Galvanised iron cleaner
- Paint Stripper
- Mould Stop/Fungal Wash
- Wood Filler



Contact: 010 972 2700  
[www.panachepaints.co.za](http://www.panachepaints.co.za)

*Place your store details here*

*The key to a successful paint project is  
Preparation, preparation, preparation!*